

save^E[®]

Advanced Phase Change Materials

PLUSS[®]

TECHNOLOGY FOR
A BETTER WORLD

Phase Change Materials For
Refrigeration Application

CHEST FREEZER WITH PCM

Solution for Ice cream freezer



PCM pouch wrapped around the evaporator coil



Dimension of the Pouch: 500X157X17mm

Wt. of the pouch: 800gms

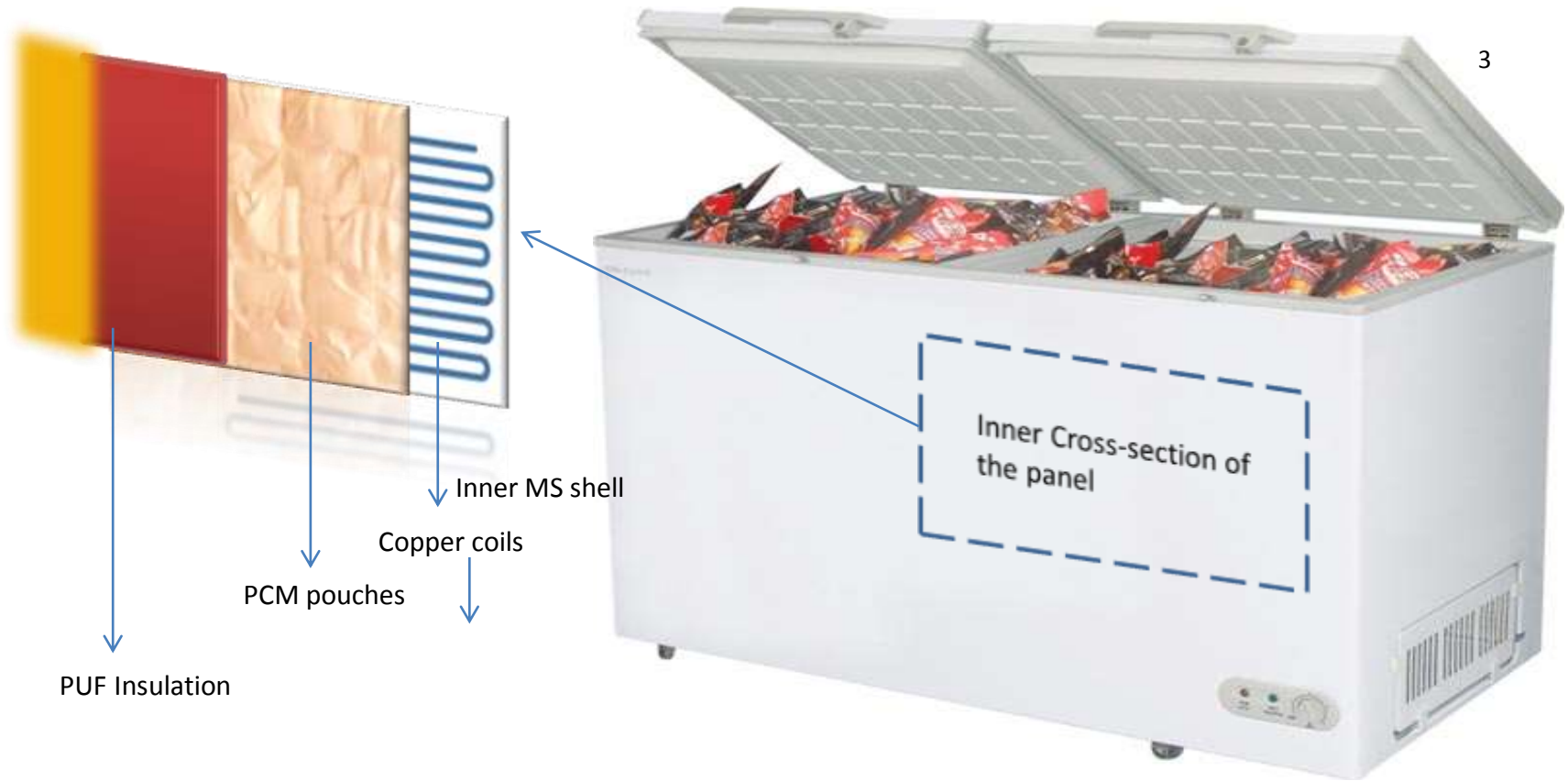
Type: - Nylon multi layered

- Four segmented(Each segment 200gms)

PCM Used: Minus 23 deg C and Minus 10 degC

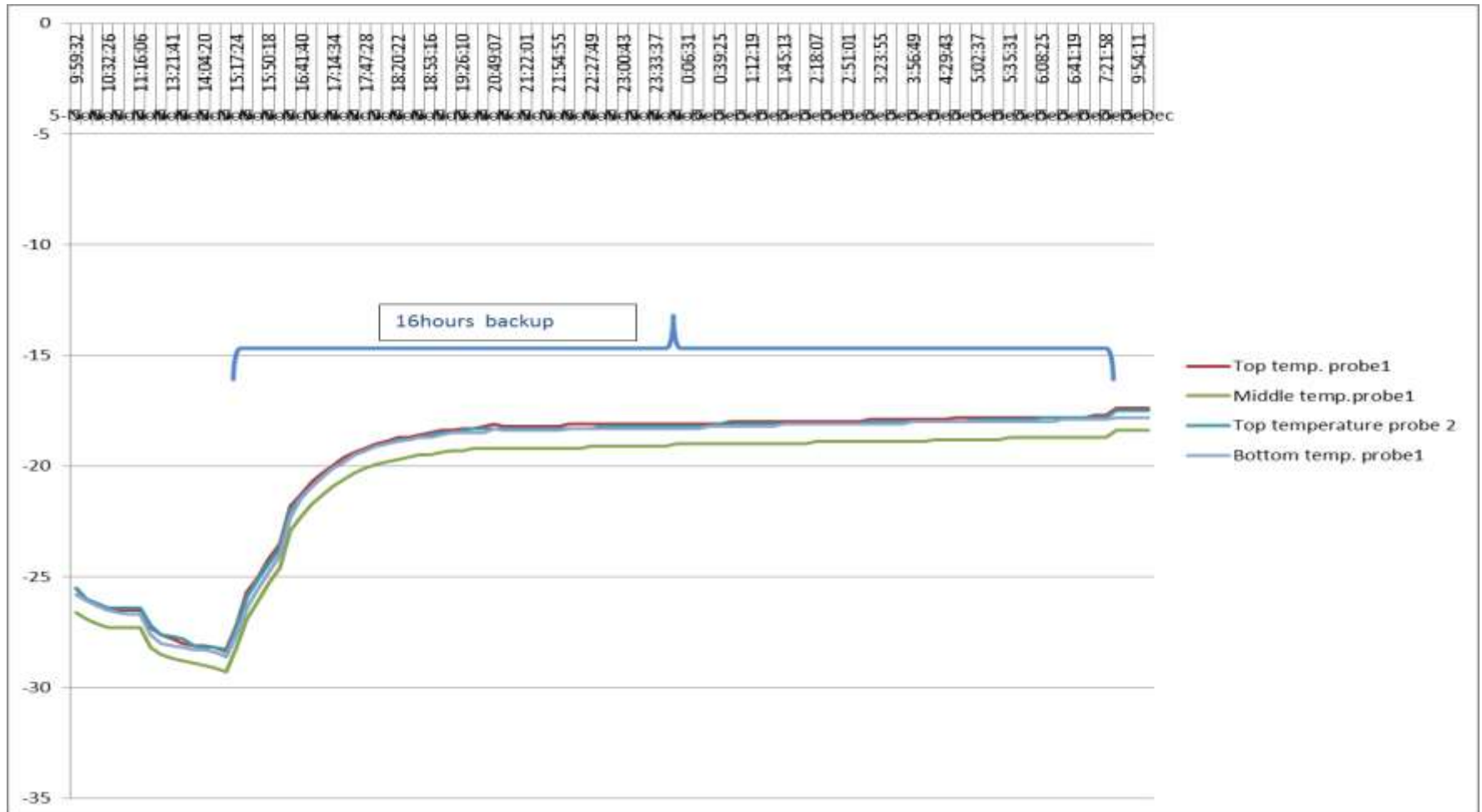
CHEST FREEZER WITH PCM

Solution for Ice cream freezer





RESULT ON A 1100 LTR. FREEZER



COMPARISON OVER GLYCOL

For a 1100 Ltr Chest Freezer Machine – Product Ice Cream



Inner cooling Chamber

PCM

Qty – 70 Litres

Modular in design

Non-corrosive encapsulation

Protected with encapsulation

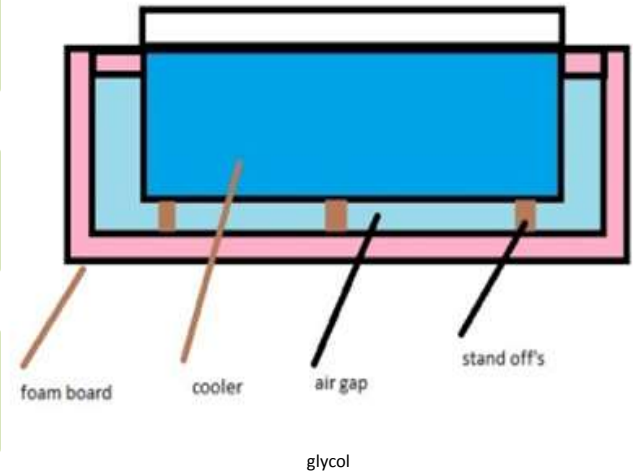
GLYCOL

Qty – 200 Lites

Flooded

Corrosive

Susceptible to damage during transport and handling



FREEZER ON WHEELS WITH PCM

Our PCM application on different types of FOW

Evaporator in direct contact with PCM

- Non Metallic Body.
- Quick freezing time.
- 10 – 12 hrs of backup

PCM encapsulated in pouches on evaporator

- Metallic Body.
- 10 – 12 hrs of backup



Plastic Moulded FOW



Plastic Moulded FOW